

Аксессуары для систем контроля микроклимата

Нагреватели, термостаты для опасных зон

ELDON DANHL, HLHEAT, HLTSTAT, HLTHERMNC

Технические характеристики



Архангельск (8182)63-90-72
Астана (7172)727-132
Астрахань (8512)99-46-04
Барнаул (3852)73-04-60
Белгород (4722)40-23-64
Брянск (4832)59-03-52
Владивосток (423)249-28-31
Волгоград (844)278-03-48
Вологда (8172)26-41-59
Воронеж (473)204-51-73
Екатеринбург (343)384-55-89
Иваново (4932)77-34-06

Ижевск (3412)26-03-58
Иркутск (395)279-98-46
Казань (843)206-01-48
Калининград (4012)72-03-81
Калуга (4842)92-23-67
Кемерово (3842)65-04-62
Киров (8332)68-02-04
Краснодар (861)203-40-90
Красноярск (391)204-63-61
Курск (4712)77-13-04
Липецк (4742)52-20-81

Киргизия (996)312-96-26-47

Магнитогорск (3519)55-03-13
Москва (495)268-04-70
Мурманск (8152)59-64-93
Набережные Челны (8552)20-53-41
Нижегород (831)429-08-12
Новокузнецк (3843)20-46-81
Новосибирск (383)227-86-73
Омск (3812)21-46-40
Орел (4862)44-53-42
Оренбург (3532)37-68-04
Пенза (8412)22-31-16

Россия (495)268-04-70

Пермь (342)205-81-47
Ростов-на-Дону (863)308-18-15
Рязань (4912)46-61-64
Самара (846)206-03-16
Санкт-Петербург (812)309-46-40
Саратов (845)249-38-78
Севастополь (8692)22-31-93
Симферополь (3652)67-13-56
Смоленск (4812)29-41-54
Сочи (862)225-72-31
Ставрополь (8652)20-65-13

Казахстан (772)734-952-31

Сургут (3462)77-98-35
Тверь (4822)63-31-35
Томск (3822)98-41-53
Тула (4872)74-02-29
Тюмень (3452)66-21-18
Ульяновск (8422)24-23-59
Уфа (347)229-48-12
Хабаровск (4212)92-98-04
Челябинск (351)202-03-61
Череповец (8202)49-02-64
Ярославль (4852)69-52-93

Адрес сайта: www.eldon.nt-rt.ru || эл. почта: efd@nt-rt.ru

Thermal Management

Hazardous Location Heating

Accessories

Hazardous location heaters, DAHHL

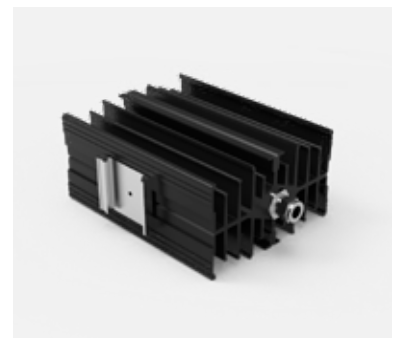
- Description:** 50 W and 80 W models can be mounted directly to manifolds, measuring or analysing instruments, control valves, and similar equipment. 200 W, 300 W, 400 W, 600 W models are finned heaters that heat the area by transferring the heat from the heater to surrounding air, creating a convection current.
- Material:** Black anodized aluminium.
- Heating element:** Conductive and convective heating types available.
- Operating temperature:** Provides freeze protection down to -60 °C (-76 °F). Maximum temperature 150 °C (302 °F).
- Approvals:** ATEX, IECEx; II2G Ex d IIC T3 / II2 D Ex Td A21 IP 65 T200 C; NEC CSA us; Class I, Div 1 Groups A, B, C, D / Class II Div 1 Groups E, F, G
- Pack quantity:** 1 piece.
- Note:** A thermostat, range HLTSTAT, is required for 400 W and 600 W models. It is sold separately as an accessory.



Heating Power (W)	H	W	D	Weight (kg)	Heating type	Power regulation	Temperature classification	Rated voltage (VAC/VDC)	Item no.
50	190	40	30	0,5	Conduction	Self limiting	T4	110/265	DAHHL501AC
80	190	40	30	0,5	Conduction	Self limiting	T3	110/265	DAHHL801AC
200	225	229	60	3,95	Convection	Self limiting	T3	110/265	DAHHL200AC
300	325	229	60	5,65	Convection	Self limiting	T3	110/265	DAHHL300AC
400	225	229	60	3,95	Convection	Constant power	T3	108/132	DAHHL4001A
400	225	229	60	3,95	Convection	Constant power	T3	207/253	DAHHL4002A
600	325	229	60	5,65	Convection	Constant power	T3	108/132	DAHHL6001A
600	325	229	60	5,65	Convection	Constant power	T3	207/253	DAHHL6002A

Hazardous location heaters, HLHEAT

- Description:** Large convection surface. DIN clip for mounting. Maintenance-free. Surface temperature T4 135 °C when mounted vertically.
- Material:** Extruded aluminium heat sink. Black anodized.
- Heating element:** High-performance heating cartridge (element).
- Connection:** Connection cable: Si HF-JZ 3 x AWG 18 x 3.3 ft (0.75 mm² x 1 m).
- Protection:** IP 65
- Approvals:** Conformity Certificate LCIE (Laboratoire Central des Industries Electriques) ; LCIE 01 ATEX 6073; EEx d IIC T4/II 2 GD, IP 6x T135 °C
- Pack quantity:** 1 piece.



Heating Power (W)	H	W	D	Heating type	Temperature classification	Rated voltage (VAC)	Item no.
100	180	118	69	Convection	T4 135 °C	110-120	HLHEAT100

Hazardous location thermostats, HLTSTAT

Description:	The thermostat closes the circuit when the temperature is below the setpoint and opens it when the temperature is above the setpoint.
Material:	Seawater-proof aluminium, black anodized.
Operating temperature:	-60 to +60 °C. Maximum permissible operating temperature range at normal rating: -60 to +150 °C.
Connection:	1 m long silicone cable, notch and oil resistant, 3x AWG16; Ø 9.4 mm.
Protection:	IP 66 / IP 68 (1bar/30min).
Approvals:	PTB 03 ATEX 1136 X; II 2 G Ex db IIC T6; II 2 D Ex tb IIIC T80 °C; IECEX PTB 07.0054X; CSA 1655545 (LR43674); Cl. I, Grp. ABCD T6; Cl. II Grp. EFG
Pack quantity:	1 piece.



Switch On/Off	H	W	D	Weight (kg)	Temperature classification	Rated voltage (VAC/VDC)	Max Current (A)	Item no.
TON 20 °C/TOFF 28 °C	89	41	30	28	T6	0-275 V	10	HLTSTAT20C
TON 10 °C/TOFF 18 °C	89	41	30	28	T6	0-275 V	10	HLTSTAT10C

Hazardous location thermostats, HLHERMNC

Description:	The thermostat closes the circuit when the temperature is below the setpoint and opens it when the temperature is above the setpoint. Thermostatic bimetallic sensor element. One-pole contact opens with rising temperature. Compact design. High switching capacity. Small hysteresis (switching difference). Long service life (greater than 100,000 cycles). Set temperature. Mounting bracket and DIN clip for mounting.
Material:	Black anodized aluminium.
Switch capacity:	at 250VAC: 4A resistive; 1A ind. (cos f = 0.6).
Connection:	Si HF - JZ 3 x AWG 18 x 3.3 ft (0.75 mm ² x 1 m).
Protection:	IP 65.
Approvals:	Conformity Certificate LCIE (Laboratoire Central des Industries Electriques) ; LCIE 01 ATEX 6074 ; EEx d IIC T6/II 2 GD, IP 6x T85 °C.
Pack quantity:	1 piece.



Switch On/Off	Temperature classification	Rated voltage (VAC/VDC)	Item no.
TON 4 °C/TOFF 25 °C	85 °C	250/100	HLHERMNC

Архангельск (8182)63-90-72
Астана (7172)727-132
Астрахань (8512)99-46-04
Барнаул (3852)73-04-60
Белгород (4722)40-23-64
Брянск (4832)59-03-52
Владивосток (423)249-28-31
Волгоград (844)278-03-48
Вологда (8172)26-41-59
Воронеж (473)204-51-73
Екатеринбург (343)384-55-89
Иваново (4932)77-34-06

Ижевск (3412)26-03-58
Иркутск (395)279-98-46
Казань (843)206-01-48
Калининград (4012)72-03-81
Калуга (4842)92-23-67
Кемерово (3842)65-04-62
Киров (8332)68-02-04
Краснодар (861)203-40-90
Красноярск (391)204-63-61
Курск (4712)77-13-04
Липецк (4742)52-20-81

Киргизия (996)312-96-26-47

Магнитогорск (3519)55-03-13
Москва (495)268-04-70
Мурманск (8152)59-64-93
Набережные Челны (8552)20-53-41
Нижний Новгород (831)429-08-12
Новокузнецк (3843)20-46-81
Новосибирск (383)227-86-73
Омск (3812)21-46-40
Орел (4862)44-53-42
Оренбург (3532)37-68-04
Пенза (8412)22-31-16

Россия (495)268-04-70

Пермь (342)205-81-47
Ростов-на-Дону (863)308-18-15
Рязань (4912)46-61-64
Самара (846)206-03-16
Санкт-Петербург (812)309-46-40
Саратов (845)249-38-78
Севастополь (8692)22-31-93
Симферополь (3652)67-13-56
Смоленск (4812)29-41-54
Сочи (862)225-72-31
Ставрополь (8652)20-65-13

Казахстан (772)734-952-31

Сургут (3462)77-98-35
Тверь (4822)63-31-35
Томск (3822)98-41-53
Тула (4872)74-02-29
Тюмень (3452)66-21-18
Ульяновск (8422)24-23-59
Уфа (347)229-48-12
Хабаровск (4212)92-98-04
Челябинск (351)202-03-61
Череповец (8202)49-02-64
Ярославль (4852)69-52-93